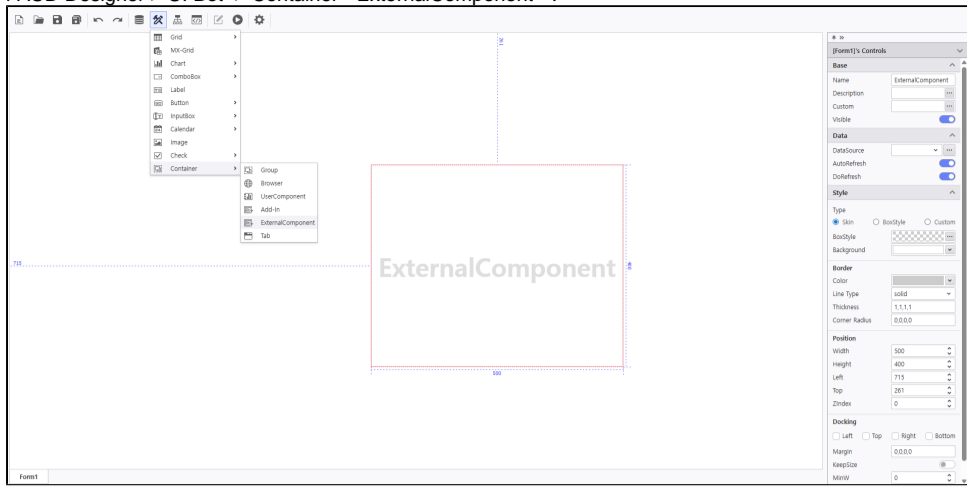
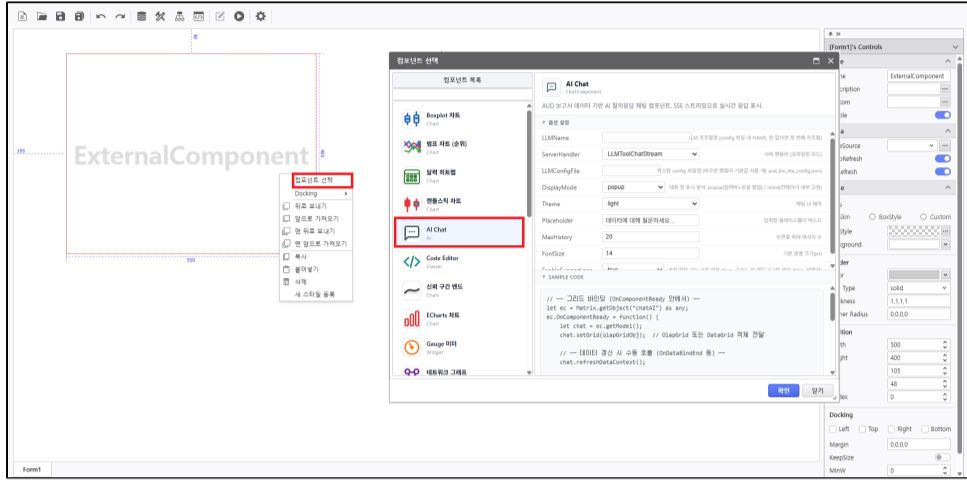


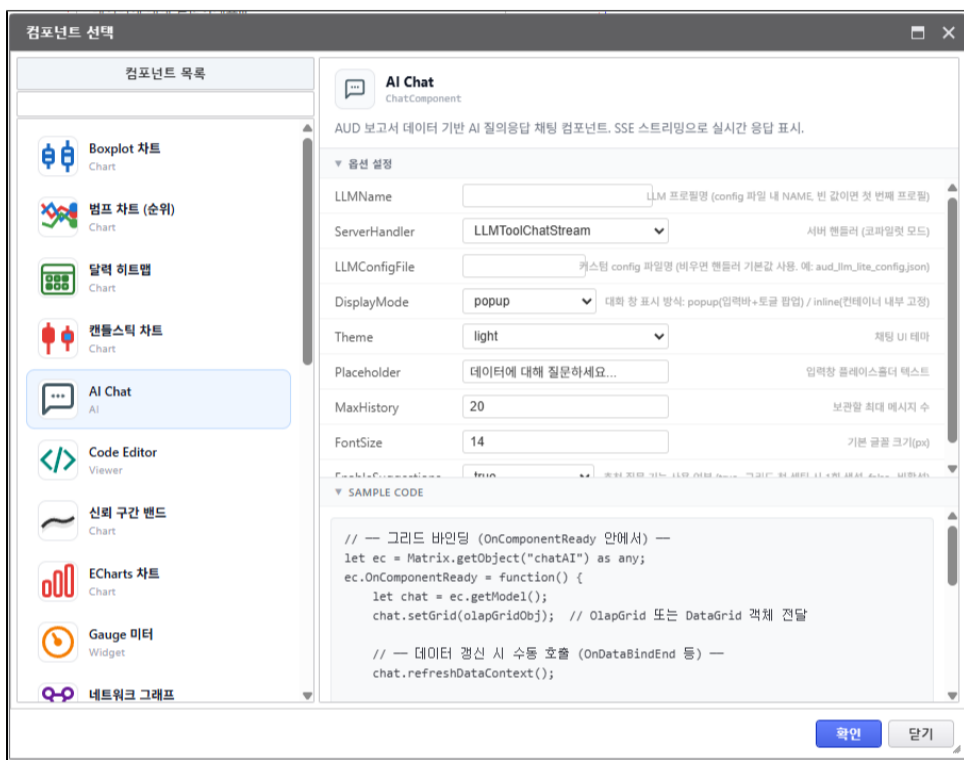
a. i-AUD Designer > UI Bot > Container "ExternalComponent" .

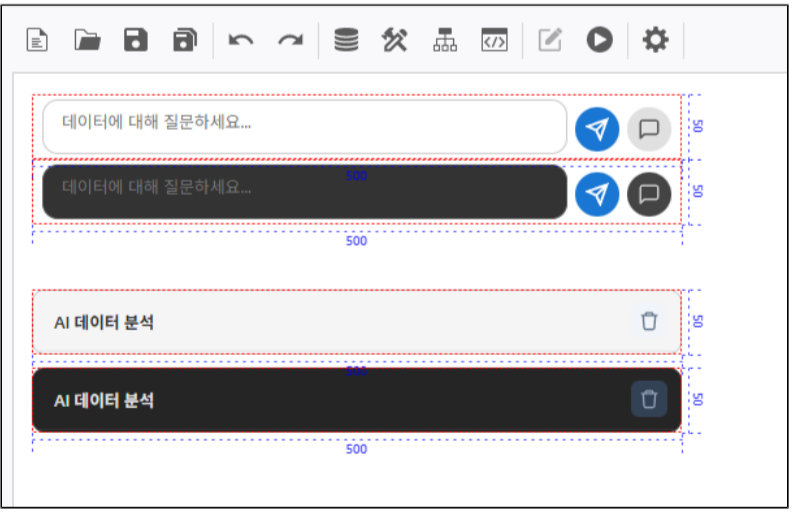


b. ExternalComponent > " " .
c. "AI Chat" .



3.



LLMName	LLM.config 'NAME' . config ** ** .	"" ()
ServerHandler	(). LLMToolChatStream: Full(+UI) LLMLiteChatStream: Lite(SQL)	LLMToolChatStream
LLMConfigFile	config config . .	"" ()
DisplayMode	. popup: + (-) inline: 3 .	popup
Theme	UI 	light
Placeholder		" ..."
MaxHistory	.	20
FontSize	UI (px)	14
EnableSuggestions	. true: 1 false: .	true
Disclaimer	Chat i-AUD App version. 7.0.610.0-202606241514 / 7.3.500.0-202606241755	"" ()

AI 데이터 분석
🗑️ ✖

AI의 답변에는 오류가 있을 수 있으므로, 실제 통계표의 값과 교차 검증하시기 바랍니다.2

📍 💬

Script API [setDisclaimer]

eg.chatModel.setDisclaimer("AI", ".");

```

1 var chatAI = Matrix.getObject("chatAI");
2 chatAI.OnComponentReady = function () {
3   var chatModel = chatAI.getModel();
4   if (chatModel)
5     return;
6   chatModel.setMatrix(Matrix);
7   chatModel.addGrid(Matrix.getObject("OlapGrid"));
8   chatModel.addParam("userName", Matrix.GetUserInfo().UserName);
9   chatModel.addParam("reportTitle", Matrix.getObject("dataName").Text);
10  chatModel.setServerHandler("LLMliteChatStream");
11  chatModel.setLLMConfigFile("aud_llm_lite_config.json");
12  chatModel.setDisclaimer("AI의 답변에는 오류가 있을 수 있으므로, 실제 통계표의 값과 교차 검증하시기 바랍니다.");
13 };
14

```

✔

- Export .

⚠

- CONTEXT_ROOT/extension/AUD/extcomponent

<input checked="" type="checkbox"/>	API Open	<input checked="" type="checkbox"/>	UI Open	<input type="checkbox"/>	Read Only	<input type="checkbox"/>	Not Use	<input type="checkbox"/>	Hidden	<input type="checkbox"/>	Not Recommend	<input type="checkbox"/>
<ul style="list-style-type: none"> • i-AUD : 7.3.500.0-202606082202, 7.0.610.0-202606090847 • mal-extend : 7.0.500.184, 7.0.610.10 • aud-mcp-service: 1.0.0.1 												

i

- URL :
