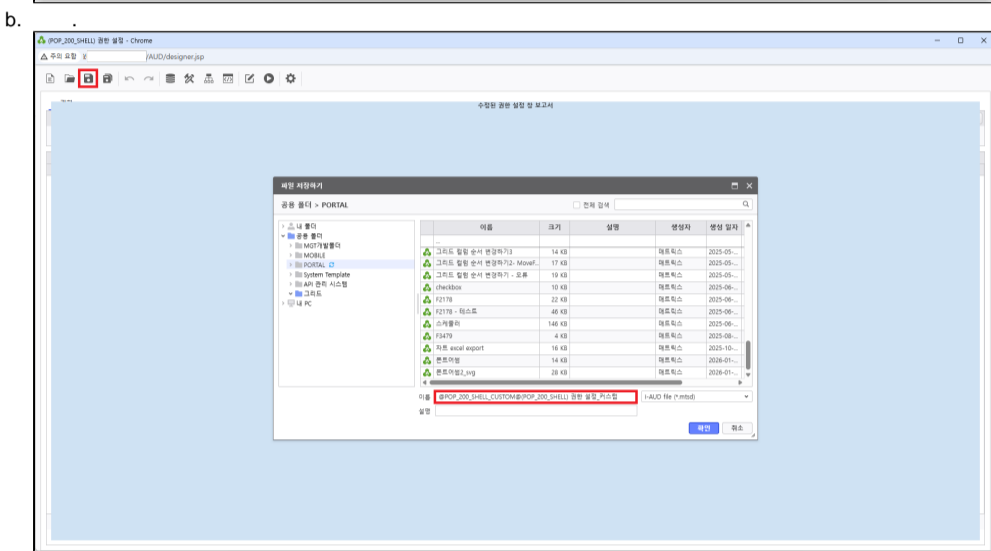
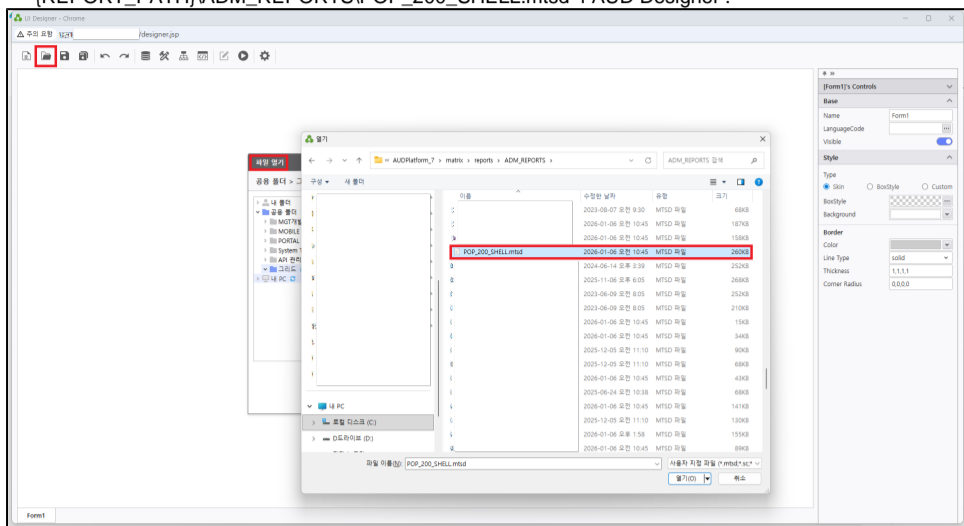


AUD Platform

1.

1. a. `\"(REPORT_PATH)\\ADM_REPORTS\\POP_200_SHELL.mtsd i-AUD Designer .`



[FileDialog]

2.

1. `AUD Platform URL .`
2. `ADMIN > > > [] .`

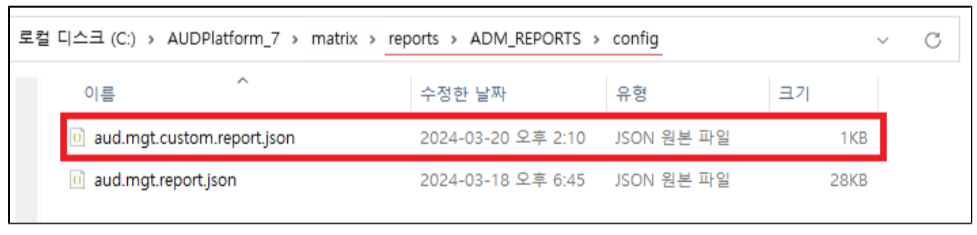


| | |
|---------------|--|
| AUTHORITY_URL | (ex) /AUD/popview.jsp?id=POP_200_SHELL_CUSTOM() |
|---------------|--|

AUTHORITYURL .

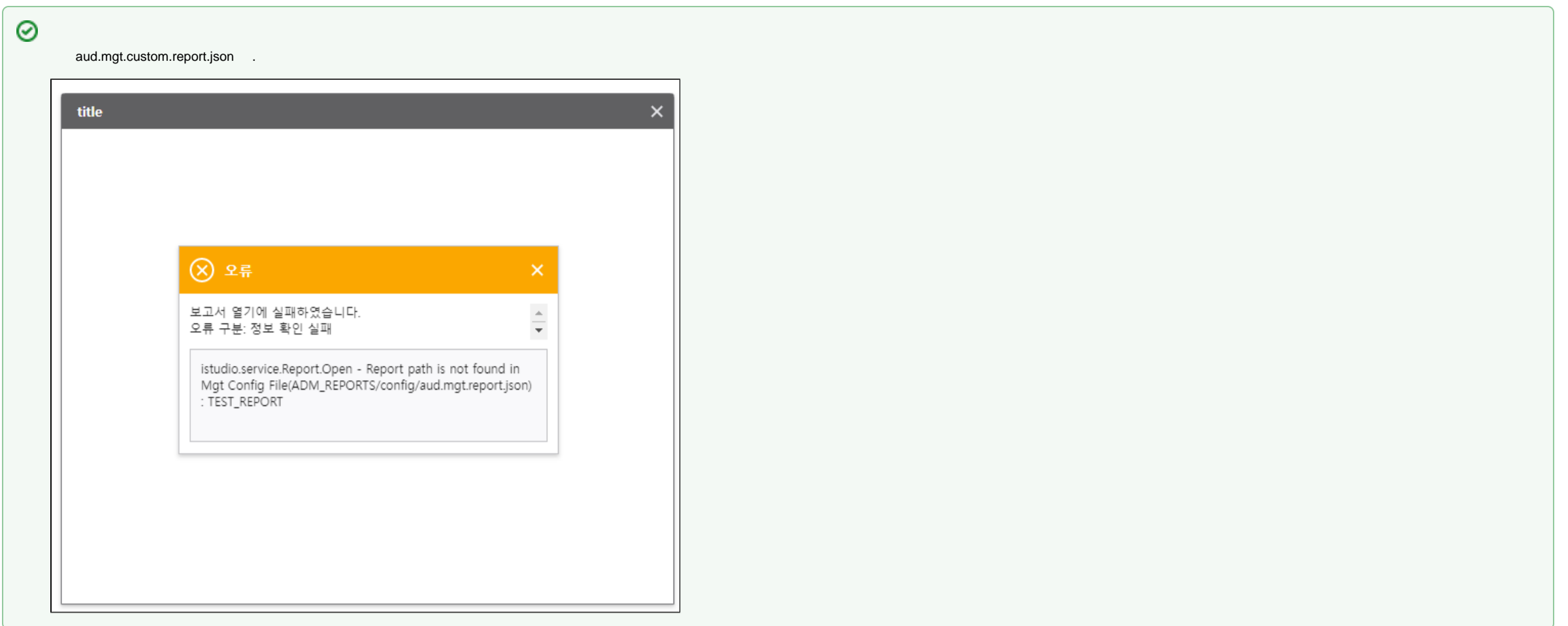
3. aud.mgt.custom.report.json

1. `aud.mgt.custom.report.json . , .`
2. `REPORTS_PATH\\ADM_REPORTS\\config , .`



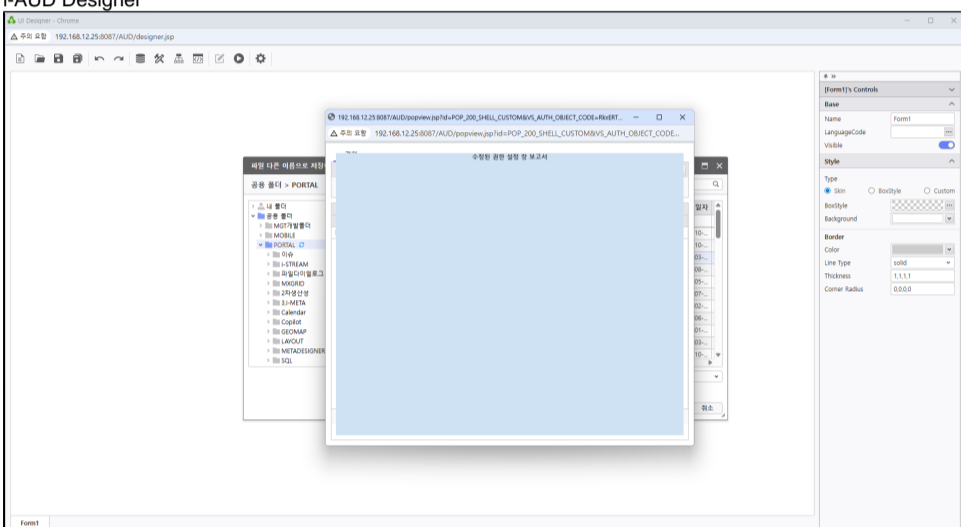
```

C > AUDPlatform_7 > matrix > reports > ADM_REPORTS > config > { } 2
1
2
3
4
5
6
7
8
{
  "REPORT_CODE": "POP_200_SHELL_CUSTOM",
  "REPORT_PATH": "MATRIX_TEMPLATE_MENU/POP_200_SHELL_CUSTOM.mtsd",
  "REPORT_NAME": "권한 설정 창",
  "AUTH": ""
}
    
```



4.

1. i-AUD Designer



2. i-MATRIX Designer

