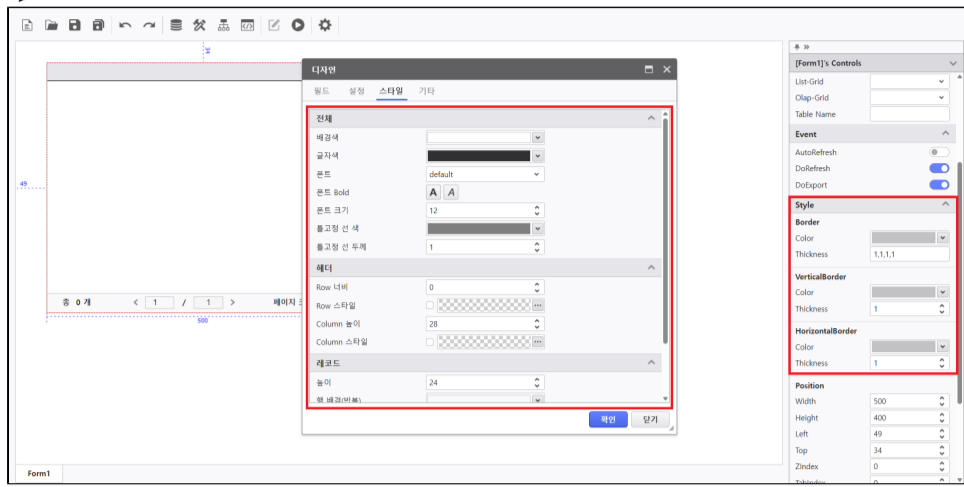


- 1.
  - a. Grid `getStyleOption()` API .
  - b.
    - i. PropertyGrid Border, VerticalBorder, HorizontalBorder
    - ii. >



- 2.
  - a. API
    - i. API [{/help/aud/interfaces/aud.control.grids.StyleOption.html}](#) .

aud / control / grids / StyleOption /

### Interface StyleOption

DataGrid/TreeGrid 스타일 옵션

```

Interface StyleOption {
  BackgroundColor: Color;
  Border: BorderInfo;
  FixedRowStyle: FixedRowStyleOption;
  FontBold: boolean;
  FontFamily: string;
  FontItalic: boolean;
  FontSize: number;
  ForegroundColor: Color;
  FrozenLineColor: Color;
  FrozenLineThickness: number;
  HeaderStyle: HeaderStyleOption;
  HorizontalBorder: BorderInfo;
  RecordStyle: RecordStyleOption;
  VerticalBorder: BorderInfo;
}

```

Defined in src/aud/control/grids/StyleOption.ts9

**Index**

**Properties**

- BackgroundColor
- Border
- FixedRowStyle
- FontBold
- FontFamily
- FontItalic
- FontSize
- ForegroundColor
- FrozenLineColor
- FrozenLineThickness
- HeaderStyle
- HorizontalBorder
- RecordStyle
- VerticalBorder

**Settings**

**On This Page**

- Background
- Border
- FixedRowStyle
- FontBold
- FontFamily
- FontItalic
- FontSize
- ForegroundColor
- FrozenLineColor
- FrozenLineThickness
- HeaderStyle
- HorizontalBorder
- RecordStyle
- VerticalBorder

- ii. API : [\[i-AUD\] AUD API](#) .

b.

```

function setStyleOptions(grid){
  const styleOption = grid.getStyleOption();

  //PROPERTYGRID>BORDER
  styleOption.Border.Thickness = TXT_BORDER.Text;
  styleOption.Border.Color = CLR_BORDER.Color;
  styleOption.VerticalBorder.Thickness = TXT_BORDER_V.Value;
  styleOption.VerticalBorder.Color = CLR_BORDER_V.Color;
  styleOption.HorizontalBorder.Thickness = TXT_BORDER_H.Value;
  styleOption.HorizontalBorder.Color = CLR_BORDER_H.Color;
  // >>
  styleOption.FontBold = CHK_BOLD.Checked;
  styleOption.FontItalic = CHK_ITALIC.Checked;
  styleOption.FontFamily = COM_FAMILY.Text;
  styleOption.FontSize = TXT_SIZE.Value;
  styleOption.ForegroundColor = CLR_FONT.Color;
  styleOption.BackgroundColor = CLR_BACK.Color;
  styleOption.FrozenLineColor = CLR_FROZEN.Color;
  styleOption.FrozenLineThickness = TXT_FROZEN.Value;
  // >>
  var headerStyle = styleOption.HeaderStyle;
  headerStyle.RowHeaderWidth = TXT_ROW_SIZE.Value;
  headerStyle.RowHeaderStyle = STYLE_ROW.BoxStyle;
  headerStyle.ColumnHeaderHeight = TXT_COLUMN_SIZE.Value;
  headerStyle.ColumnHeaderStyle = STYLE_COLUMN.BoxStyle;

  // headerStyle.RowHeaderWidth = TXT_ROW_SIZE.Value;
  // headerStyle.ColumnHeaderHeight = TXT_COLUMN_SIZE.Value;
  // >>
  var recordStyle = styleOption.RecordStyle;
  recordStyle.RowHeight = TXT_RECORD_SIZE.Value;
  recordStyle.OddRowBackgroundColor = CLR_ODD.Color;
  recordStyle.SelectedRecordColor = CLR_SELECTED.Color;
  recordStyle.LastSelectedRecordColor = CLR_LAST_SELECTED.Color;

  // >>
  var fixedRowStyle = styleOption.FixedRowStyle;
  fixedRowStyle.TopRowStyle = STYLE_TOP.BoxStyle;
  fixedRowStyle.BottomRowStyle = STYLE_BOTTOM.BoxStyle;
}

Matrix.getObject("BTN_UPDATE_NEW").OnClick = function(s,e){

  setStyleOptions(GRD_DATA);
  setStyleOptions(GRD_GROUP);
  setStyleOptions(GRD_TREE);

  GRD_DATA.Update();
  GRD_GROUP.Update();
  GRD_TREE.Update();
}

```

• 1 .

RowHeaderWidth	
ColumnHeaderHeight	
RowHeight	
OddRowBackground	
FontBold	7.0.500.20250807-11 7.0.500.20250807-11
FontItalic	
FontFamily	
FontSize	
Foreground	
Background	

	<input checked="" type="checkbox"/> API Open	<input type="checkbox"/> UI Open	<input type="checkbox"/> Read Only	<input type="checkbox"/> Not Use	<input type="checkbox"/> Hidden	<input type="checkbox"/> Not Recommend	<input type="checkbox"/>
	• i-AUD: 7.3.500.0-202509291308						